



## Customer-Owned Meter Equipment

### Meter Mounting Heights and Tall Multi-meter Stacks

---

Alabama Power Company's meter mounting height rules, which have been in effect since 1988, are as follows (from Rule E-2 of the *APSC Special Electric Rules*):

1. *The center of meters hereafter installed shall not be more than five (5) or less than four (4) feet above final grade or floor level.*
2. *When metering for seven (7) or more apartments grouped on one wall, the center of meters hereafter installed may be as high as six (6) feet above final grade or floor level.*

Some multi-position meter units that otherwise fit the catalog number templates listed below **are unacceptable on the Alabama Power system because of meter mounting height limits**. The following guidelines clarify these situations:

- 5-tall vertical meter stacks. These are not allowed under any circumstances. They are physically too tall to allow meter heights to meet both the minimum and maximum height limits.
- 4-tall vertical meter stacks. These require prior approval by local APC personnel for each specific installation. In many cases, these units cannot meet the meter mounting height limits.
- 3- and 2-tall vertical meter stacks. Assuming these models otherwise meet APC requirements and are listed below, these units are allowed without prior approval. However, actual mounting of the units and control of final grade near the units must be managed to ensure the meter heights fall within the allowable minimum and maximum mounting limits. Failure of an installation to meet the mounting height requirements will result in refusal of that installation.

Note also that while most 3-tall meter stacks do fall within meter mounting limits, we have encountered some non-residential units that exceed the limits.

### Security Requirements

---

Every meter socket must support the addition of an APC high security lock.

#### **Multi-position Sockets**

Design of some multi-position meter sockets can make security locking difficult, if not impossible. For this reason, only ring-type sockets are acceptable in multi-position units.

*Exceptions:*

- Horizontal multi-meter units. Multi-position sockets with no vertically stacked meter positions may use ring- or ringless-style covers. If ringless-style covers are used, the sockets must provide adequate access to the bottom side of each meter compartment to accommodate installation of security locks.



- Sockets with lever bypass mechanisms. These designs generally require removal of ringless-style covers for operation of the bypass switch prior to removal of the meters. These sockets must provide acceptable alternate methods of applying security locks.

**Equipment Weight Limit**

No customer-owned metering equipment shall be acceptable if it has a lift-off door or cover that exceeds 40 lbs. This limit applies to wiring compartments that house service or service entrance conductors as well as to meter compartments. Hinged doors or covers that are otherwise supported while open are not subject to this limit. Multi-part doors or covers are acceptable if such parts can be removed individually and each part does not exceed the above stated limit.

**Equipment for Commercial Customers**

With commercial customers, it has become increasingly difficult to schedule service interruptions for meter changeouts or tests. For 120, 208, or 240 volt services, Company-provided meter sockets with lever bypass switches allow for meter removals without service interruptions. (See [Bypass Socket](#).) Commercial (or industrial) customers who elect to provide their own meter sockets shall be instructed to choose equipment that includes *lever bypasses* similar to those in Company sockets. If such equipment is not on the list of customer-owned units below, a sample must be submitted for pre-acceptance testing.

**Inspection Jurisdictions**

It is the customer’s responsibility to ensure the meter socket meets current National Electric Code requirements in the jurisdiction where it will be installed.

**Customer-owned Meter Equipment in Which Alabama Power Company Will Install Its Meters**

**Single Position Meter Sockets**

**200A or less, Overhead Only with bypass lever**

**Cooper / B-Line:**

EL20L73GR1	EL20L73A1	EL20L53AL1		
------------	-----------	------------	--	--

**Landis+Gyr:**

49407-82AB

**Leviton:**

LP820-LMC	LP820-5MC	LP815-LMC	LP815-5MC	
-----------	-----------	-----------	-----------	--



## Single Position Meter Sockets

200A or less, Overhead Only without bypass lever

### Cooper / B-Line:

EN20L43GR1	EN20L43AL1			
------------	------------	--	--	--

### Durham:

UT83395C-SC	UAT83395C-SC	1004296	1004296A	
-------------	--------------	---------	----------	--

### Eaton / Cutler-Hammer:

35MM120R12	MB1212L200BTS	MHM200PAPC	WMB202040S	MBT48B125BTS
CGBT24M1S	MB2040B200BTS	UTRS101BE	WMB204040S	MBT48B200BTS
CGBT30M2S4	MB4040B200BTS	UTRS202NCH	WMB2048SLB	MBB150BTSC
CHR3N7NS	MB816B200BTS	CMB1212L200BTS	WML20612SN	MBB200BTSC
CMB1212B200BTS	MB816P200BTS		HP816P400BSL	MB48B200BTSG
CMB2424B200BTS	CMB2436B200BTS			

### General Electric:

TM420RMS	TSLR1220CSAL	TSMF420CSFL	TSMR020CSGP	
TSM820CSFL	TSM820CSCU	TSMR420CSFLFMG	TSMR2020CSCUFMG	
TSMR415CSFLFMG	TSLR1220FSAL	TSM820CSFL	TSMR815CSFLFMG	

### Leviton:

200 LP820-MC				
--------------	--	--	--	--

### Midwest:

R208CR2A	R256EB1NA	MS250C		
----------	-----------	--------	--	--

### Milbank:

U7021-DL-TG*	U9647N-RL-200	UAP5024-XL	UAP9421-RL-PDXLS	U5168-XTL-200
U7021-RL-TG*				

\* OH only for Permanent Services.

### Siemens:

MM0202B1150R	MM0202B1200R	MC0408B1150RT	MC0816B1200RTH	MC0816B1150RCT
MC2040B1150RC	MC2040B1200RC	MC0408B1200RT	MC0816B1200RTZ	MC0606L1200RA
MC2040B1150R	MC2040S1200JLC	MC0606L1200R*	MC0816B1200RCT	MC0816B1200RT
MC2040B1200R	MC2040B120RC2	UAT317-DGAB	MC0816B120RCT2	MC0816B115RCT2
MC2040B115RC2		UAT317-0GF**		

\*Special Note: MC0606L1200R does not meet 2020 NEC.

\*\* May be used on OH and UG temporary service installations.

### Square D:

RC816F200C	QC12L200C	QC2040M200C	QC2442M200C	SC3040M200RS
RC816F150C	QC816F125C	QC816F200C	RC816D200C	RC3042M200PS
RC12L200C	RC2040M200C	SC2040M200F	UT-RS223A-SQD	CM200S
CQRA200	C200RB	RC2M200S	RC200S	C2M200RB



## Single Position Meter Sockets

200A or less, Overhead or Underground without bypass lever

### Durham:

UT83395C-SC	UAT83395C-SC	1004296	1004296A	
-------------	--------------	---------	----------	--

### Eaton / Cutler-Hammer:

MB2040B200BTSG	MB816B150BTSG	MB816P150STD	MB816P200BTSG
MB816B200BTSG	MB816B200STD	MP816B150STD	UTRS213BE*
UTRS213CE*	MB48B200BTSG		

\* Must use 3" conduit for ug installation. Socket only has 2.5" knockout. Field modification necessary.

### General Electric:

TSMR415CSCUGP	TSMR415CSCUGPP			
TSMR420CSCUGP	TSMR420CSCUGPP			

### Midwest:

R011C010U, UG Tempo Service Box

### Milbank:

U5792-XL-SOCOA	UAP5792-XL-SOCOA	U5792-XL-SOCO	UAP5792-XL-SOCO	UAP5734
AP2167-DL-TG-SOCO	U5734-XL-SOCOA	AP-2167-DL-TG	U7021-DL-TG*	U5101-XL-38GR**
U7021-RL-TG*	U5896-PXL-200			

\* OH/UG for Temporary Services only.

\*\* 125 amp temporary service socket

### Siemens:

MM0406L1200RGA	MC0816B1200RGA	MC0408B1200RGA	MC0408B1150RGA	UAT417-0GF**
MC0606L1200RGA*	MC0816B1150RGA	UAT837-XGSE		UAT417-XG***

\*Special Note: MC0606L1200RGA does not meet 2020 NEC.

\*\* Must use 3" conduit for ug installation. Socket only has 2.5" knockout. Field modification necessary.

\*\*\* Line/Load/Neut. Lug max. 2/0 AWG, Socket has 2.5" knockout max.

### Square D:

RC816F200S	RC200SFMG	RC2M200SFMG	QC816F200S	
RC12L200S	RQC150SFMG	RQC200SFMG	QC12L200S	

### Talon:

UAT817-XGBA	UAT817-XGSE			
-------------	-------------	--	--	--



**Single Position Meter Sockets**

**200A or less, Overhead or Underground with bypass lever**

**Durham:**

UT-H7213C-SC	UAT-H7213C-SC	UAT-H5213C-SC		
--------------	---------------	---------------	--	--

**Milbank:**

U3061-XL	U4433X	S5768-X-SOCO	UAP3502-RL-SOCO	UAP3061-XL-SOCO
U3061-XL-SOCO	A3061-XL	S5868-X-APCO		UAP4885-XL-SOCCA

**Siemens:**

40407-02SE	41405-02SE	41407-02SE		
------------	------------	------------	--	--

**320/400A, Overhead or Underground with bypass lever**

**Durham:**

1007180	1009749			
---------	---------	--	--	--

**Milbank:**

U401-0-2/200	U6227-X-400-K3L-5T6	U6229-X-400-K7L	S6585-X-2-200-5T9	
U6227-X-400-K3L	U6227-X-400-K3L-5T9	U6115-X-2/200-K7L	U5059-X-2/200-K3L-IL	

**Siemens:**

MM0404L1400RLM*	49004-82AB	MC3042S1400SCL		
MC0816B1400RLTM*	MK0402L1400RLM**			

\* MM0404L1400RLM and MC0816B1400RLTM does not meet 2020 NEC and require H59676 anti-inversion clip.

\*\* Requires H59676 anti-inversion clip.

**Square D:**

CU12L400L	QU12L400SL	QCD400SL	QC816D400CL	
QU12L400CL	QUM400CL	QC816D400SL	RC816D400SL	

Note: All 320/400A Meter sockets must have an anti-inversion clip in the right line side meter jaw.



**Multi Position Meter Sockets and Miscellaneous Metering Equipment**

**Durham:**

**Multiple Position w/out Bypass**

1006927	1006930	1004583A	1004586A	1004584
1006928	1006931	1004584A	1004582	1004585
1006929	1004582A	1004585A	1004583	1004586

**Eaton / Cutler-Hammer:**

**Multi-Position w/out Bypass (5-tall vertical units are not allowed. 4-tall vertical units are allowed only if the final meter heights fall within acceptable limits. Check with local Alabama Power personnel to confirm.)**

1MPn124R	1MMn12R	1MMn20R	3MMn20R	
1MPn126R		1MPn206R	3MMn12R	

The final "R" indicated ring-type sockets for Cutler-Hammer. "RRL" would indicate ringless - NOT allowed.

(The 3MM units are meter modules with 1-ph sockets and 3-ph busses. That is, 3-ph service into the unit, 1-ph -- network --service out to each customer.)

(Note: "n" represents the number of meter positions.)

**Multi-Position with Lever Bypass Mechanisms (5-tall vertical units are not allowed. 4-tall vertical units are allowed only if the final meter heights fall within acceptable limits. Check with local Alabama Power personnel to confirm.) Installation must provide unimpeded access to at least one side or the bottom of every meter compartment for the mounting of a high security lock.**

- 35MMn20R12      37MMn20R12
- 35MMn40R1240 (for 320a 1ph meters)
- 37MMn40R1240 (for 320a 3ph meters)

(Note: "n" represents the number of meter positions.)

**Single Position Pedestal**

CHRPX or CHR...PX, 125A socket on UG pedestal with breakers and/or receptacles.

If present, numbers/letters between CHR and PX refer to number of receptacles included in the unit. Used with direct-buried underground pedestal extension or flange for pad mounting. Either will be furnished by customer.

**General Electric:**

**Multi-Position Sockets w/out Bypass (5-tall vertical units are not allowed. 4-tall vertical units are allowed only if the final meter heights fall within acceptable limits. Check with local Alabama Power personnel to confirm.)**

Single phase 125 or 200a Mini Mod (all-in-one) multi-position without bypass and beginning with TMM...  
TMMR... indicates ringless, NOT allowed

Single phase 125 or 200a Meter Mod (modular) multi-position without bypass and beginning with TMP...  
TMPR... indicates ringless, NOT allowed

**Multi-Position with Lever Bypass Mechanisms (5-tall vertical units are not allowed. 4-tall vertical units are allowed only if the final meter heights fall within acceptable limits. Check with local Alabama Power personnel to confirm.) Installation must provide unimpeded access to at least one side or the bottom of every meter compartment for the mounting of a high security lock.**

Three phase 225a 4w 120/208 or 120/240 volt multi-position with lever bypass and beginning with TMPR3...



### Multi Position Meter Sockets and Miscellaneous Metering Equipment

#### Milbank:

##### Multi-Position w/out Bypass

U285n-X, where 'n' is the number of positions: 2, 3, 4, 5, or 6

S-9052-EL	S-9055-EL	S2603-FT-XT	AP2603-FT-XT
S-9053-E	S9053-EL	S2604-FT-XT	AP2604-FT-XT
S9054-EL	S-9054-E	S2605-FT-XT	AP2605-FT-XT
S9056-EL	S-9056-E	S2606-FT-XT	AP2606-FT-XT
U1722-X-F-K3-APCO	UAP1722-F-K3-APCO	AP1722-F-K3-SOCO	

##### Single Position Commercial Service & Unmetered Street Light Pedestal with Lever Bypass Mechanism

CP3B5252BRSSBKSL1 with 8" riser. 208Y/120 VAC, 3-phase, 4-wire; 200 Amps Maximum.(Must have 8" riser to meet minimum meter mounting height of 48") (Unmetered controls on pedestal add 30 watts to unmetered system billing wattage under rate ODL)

CP3B5212BRSSBKSL1 with 8" riser. 120/240VAC, 1-phase, 3-wire; 200 Amps Maximum.(Must have 8" riser to meet minimum meter mounting height of 48") (Unmetered controls on pedestal add 30 watts to unmetered system billing wattage under rate ODL)

CP3B5411GR22SP1 with 8" riser. 120/240VAC, 1-phase, 3-wire; 320A Exposed Meter Socket, 400 Amps Maximum. 22kA AIC Rating. (Must have 8" riser to meet minimum meter mounting height of 48") (Unmetered controls on pedestal add 60 watts to unmetered system billing wattage under rate ODL)

CP3B5212BSBKSP1, 120/240 VAC, 1-phase, 3-wire; 200 Amps Maximum, 200A Exposed Meter Socket, 10kA AIC Rating. (Unmetered controls on pedestal add 30 watts to unmetered system billing wattage under rate ODL)

CP3B5212BRBKSL1 Type A with 8"riser. 120/240V, 1-phase, 3-wire; 200 Amps Maximum, 200A Exposed Meter Socket, 10kA AIC Rating. (Unmetered controls on pedestal add 30 watts to unmetered system billing wattage under rate ODL)

##### Single Position Commercial Service Pedestal with Lever Bypass Mechanism

CP3B5115P42SGWFSP1 with 8"riser. 120/240V, 1-phase, 3-wire; 100 Amps Maximum, 200A Exposed Meter Socket w/bypass, 42kA AIC Rating.

CP3B51115PBKSP1 with 8"riser. 120/240V, 1-phase, 3-wire; 100 Amps Maximum, 200A Exposed Meter Socket w/bypass, 10kA AIC Rating.

CP3B51C15PPSP4, with 8"riser. 120/240V, 1-phase, 3-wire; 100 Amps Maximum, 200A Exposed Meter Socket w/bypass, 10kA AIC Rating.

#### Pacific Utility Products:

**USP Non-Residential Service Pedestal. The catalog number must match exactly to those listed. Other cat. no. must be approved before use.**

USP24R-57-M3100-318CHB-AL – 120/208V, 3-phase, 60hz, 4-wire, 200A-16S meter socket , commercial metered service pedestal.



## Multi Position Meter Sockets and Miscellaneous Metering Equipment

### Siemens:

**Power Mod Modular Metering System.** Any catalog numbers that meet the following template are acceptable, subject to mounting height limitations:

**(W)MM n p sss J**

(W)MM –indicates non -bypass sockets

Leading "W" in part number indicates N3R Outdoor rating and no "W" in part number indicates N1 indoor rating.

n - number of meter positions

p - phases (1 - single phase, 2 - network)

sss - individual socket rating (125, 225 amperes)

R - would indicate ringless socket covers, NOT allowed

J - optional, indicates 5-jaw meter socket

Example: WMM31225 is 3 meter positions, single phase, 225 amps per position

**Multi-Position w/out Bypass (5-tall vertical units are not allowed. 4-tall vertical units are allowed only if the final meter heights fall within acceptable limits. Check with local Alabama Power personnel to confirm.)**

Single phase 125 or 225 amp Uni-Pak metering. Any catalog numbers that meet the following template are acceptable, subject to mounting height limitations ([see special note](#)):

**SP bb n 1 sJ or WP bb n 1 sJ**

bb or bb - is bus rating (4 - 400 amp, 6 - 600 amp, 10 - 1000 amp, etc.)

n - is number of meter positions

1 - indicates single phase

s - is individual socket rating (1 - 125 amp, 2 - 225 amp)

R - would indicate ringless type covers, NOT allowed

J - optional, indicates 5-jaw meter socket

Example: WP6512 is a 600 amp main bus, 5 meter positions, single phase, 225 amp per position, ring-type covers WP6512J is the same unit, but with 5-jaw meter sockets

**Special Note: Siemens UNIPAK does not meet the 2020 NEC as the 6-handle service entrance rule is not allowed.**

Other numbers:

WMM-2U

WMS-6U

WMM-3U

WMS-8U

WMM-4U

UA2717-FGAB

**Single or Multi-Position with Lever Bypass Mechanisms (5-tall vertical units are not allowed. In this style, the 4-tall vertical units are also too tall to meet our mounting requirements. Check with local Alabama Power personnel to confirm.) Installation must provide unimpeded access to at least one side or the bottom of every meter compartment for the mounting of a high security lock.**

Single phase 225 amp Commercial Meter Modules:

**(W)MLn1225RJ**, where n is number of meter positions

Three phase 100 amp Commercial Meter Modules:

**(W)MLn3100RJ**, where n is number of meter positions

Three phase 200 amp Commercial Meter Modules:

**(W)MLn3225RJ**, where n is number of meter positions

Three phase IN / Single phase (network) OUT 225 amp Commercial Meter Modules:

**(W)MLn2225RJ, (W)MLn2AB225RJ, (W)MLn2BC225RJ, (W)MLn2CA225RJ**, where n is number of meter positions

Single phase 400 amp Commercial Meter Modules:

**(W)ML11400RJ (22kA AIC) , (W)ML11400RJH (35kA AIC) , (W)ML11400RJFS (100kA AIC)**

Three phase IN / Single phase (network) OUT 400 amp commercial Meter Modules:

**(W)ML12400RJ (22kA AIC) , (W)ML12400RJH (35kA AIC) , (W)ML12400RJFS (100kA AIC)**

Three phase 400 amp Commercial Meter Modules:

**(W)ML13400RJ (22kA AIC) , (W)ML13400RJH (35kA AIC) , (W)ML13400RJFS (100kA AIC)**

Application note: Leading "W" in part number indicates N3R Outdoor rating and no "W" in part number indicates N1 indoor rating. 400 amp modular meter sockets require H5976 anti-inversion clip.





## Multi Position Meter Sockets and Miscellaneous Metering Equipment

### Siemens (cont'd):

Single phase 225 amp Uni-Pak metering with lever bypass. Any catalog numbers that meet the following template are acceptable, subject to mounting height limitations:

#### WPL bb n 12RJ

L - indicates lever bypass

b or bb - is bus rating (4 - 400 amp, 6 - 600 amp, 10 - 1000 amp, etc.)

n - is number of meter positions

1 - indicates single phase

2 - is individual socket rating (225 amp)

R - indicates ringless type covers, required for lever bypass operation J - indicates 5-jaw meter socket

Example: WPL6412RJL is a 600 amp main bus, 4 meter positions, single phase, 225 amp per position, ringless covers, with lever bypass.

### Single Position Socket for Attaching to Multi-Position Modular Assemblies (e.g., for house meter)

Each of these has lever bypass.

**WCL2040B1T(n)RJ**, 1ph or network, 4- or 5-jaw

**WCL2040B2T(n)RJ**, 3ph source, 5-jaw network meter bases

**WCL2442B3T(n)RJ**, 3ph, 4 wire, 7-jaw

where (n) refers to main breaker options

### Single Position w/out Bypass (Trailer Service Panel)

MC0816MB1200SN

### Single Position 1ph Tempo Service

TL(xxx)RT(y) (ringless), TL(bb)NT(y) (ring type), with 125A main lugs

TD(xxx)RT(y) (ringless), TD(bb)NT(y) (ring type), with 100A main brkr

With Pedestal for Direct Burial

TL(xxx)RP(y) (ringless), TL(xxx)NP(y) (ring type), 125A main lugs

TD(xxx)RP(y) (ringless), TD(xxx)NP(y) (ring type), 100A main brkr

With Lever Bypass

TL(xxx)LT(y), 125A main lugs

TD(xxx)LT(y), 100A main brkr

(xxx) indicates receptacle options

(y) indicates other custom options



## Multi Position Meter Sockets and Miscellaneous Metering Equipment

### Square D:

Multi-Position w/out Bypass (5-tall vertical units are not allowed. 4-tall vertical units are allowed only if the final meter heights fall within acceptable limits. Check with local Alabama Power personnel to confirm.)

--See APPENDIX A for special requirements for Square D type EZM meter centers.--

Single phase 125-200a EZ Meter-Pak (modular) multi-position without bypass. Any catalog numbers that fit the following template are acceptable:

#### **EZM11 n sss**

Note: EZMR... indicates ringless type, NOT allowed

n - number of meter positions

sss - ampere rating per position

Single phase 125-200a EZ Meter-Pak (modular) three phase in, single phase 120/208v out multi-position without bypass. Any catalog numbers that fit the following template are acceptable:

#### **EZM31 n sss**

Note: EZMR... indicates ringless type, NOT allowed

n - number of meter positions

sss - ampere rating per position

Single phase 125-200a Meter-Pak (all-in-one design) multi-position without bypass. Any catalog numbers that fit the following template are acceptable:

#### **MPbn---**

MPR... indicates ringless type, NOT allowed

b - bus ampere rating

n - number of meter positions

sss - ampere rating per position

Examples:

MP44125:

First 4 indicates 400 ampere bus

Second 4 indicates 4 meter positions 125 is amperage per meter position

MP86200:

8 indicates 800 ampere bus

6 indicates 6 meter positions

200 is amperage per meter position

**Multi-Position with Bypass ("L" in cat. no. represents Lever Bypass) (5-tall vertical units are not allowed. 4-tall vertical units are allowed only if the final meter heights fall within acceptable limits. Check with local Alabama Power personnel to confirm.) Installation must provide unimpeded access to at least one side or the bottom of every meter compartment for the mounting of a high security lock.**

Single phase 200a EZ Meter-Pak (modular) with bypass

**EZML11n200**, "n" represents number of positions

Single phase 200a or 225a EZ Meter-Pak (modular) three phase in, single phase 120/208v out with bypass

**EZML31n200**, "n" represents number of positions

**EZML31n225**, "n" represents number of positions

Single phase 320a EZ Meter-Pak (modular) multi-position with lever bypass.

**EZML111400 EZML112400**

Three phase 200a EZ Meter-Pak (modular) with bypass

**EZML33n200**, "n" represents number of positions



## Multi Position Meter Sockets and Miscellaneous Metering Equipment

### Square D (cont'd):

Three phase 225a EZ Meter-Pak (modular) multi-position with lever bypass. These sockets must have barrel locking provision installed in each meter position.

**EZML331225, EZML332225**

Three phase 320a EZ Meter-Pak (modular) multi-position with lever bypass.

**EZML331400, EZML332400**

Single phase 200a Meter-Pak (all-in-one design) with bypass

**MPLbn200**

"b" represents bus rating

"n" represents number of positions

## Customer Owned Meter/Cabinet Support Pedestals

### TechLine Mfg.:

TLIS6TMS-GV-96-NBP-SMS-KIT - 6/8/13 Terminal Meter Socket Pedestal – Direct Burial

TLIS6TMS-GV-72-10-SMS-KIT - 6/8/13 Terminal Meter Socket Pedestal – Plate Mount

TLIS6TMS-GV-96-DL-NBP-SMS-KIT - Single and Double Door Meter Cabinet Pedestal – Direct Burial

TLIS6TMS-GV-72-10-DL-SMS-KIT - Single and Double Door Meter Cabinet Pedestal – Plate Mount

TLIS6TMS2GV-96-DL-NBP-DMS-KIT - Dual Single and Double Door Meter Cabinet Pedestal – Direct Burial



## APPENDIX A

Alabama Power Company has found installations of Square D/Schneider Electric (SqD) type EZM modular metering that present a problem with meter sealing. This occurs when meters are located immediately adjacent to and to the left of a deeper module such as a wiring module. The clearance is so small between the meter stack and the side of the deeper module that a meter sealing ring cannot be put into place after the meter is set. Figure 1 shows a typical installation. In order to get the sealing ring in place, APC must pull the meter, place the ring loosely around the meter base, and reset the meter and ring together.

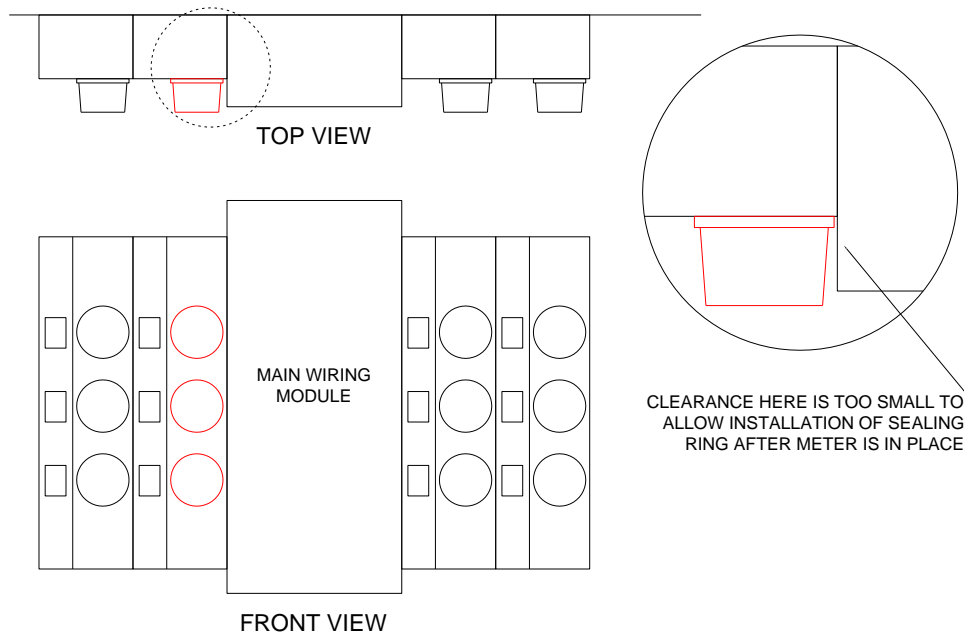


Figure 1

To avoid this situation, SqD offers an optional bus extension for its modular metering equipment. The use of one of this bus extension will eliminate our problem with meter rings. Therefore, this bus extension is required by APC any time all of the following conditions exist:

- SqD modular meter centers (EZM... models)
- Ring style covers. (Ringless style is not allowed in multi-position sockets such as this because of other problems with security sealing.)
- A meter stack module is located immediately to the left of a module extending farther from the wall than the meter stack. Typically, this will occur with the first meter stack to the left of a main wiring module. It should not occur when a meter stack is to the left of another meter stack.



Figure 2 shows a typical installation with the bus extension included.

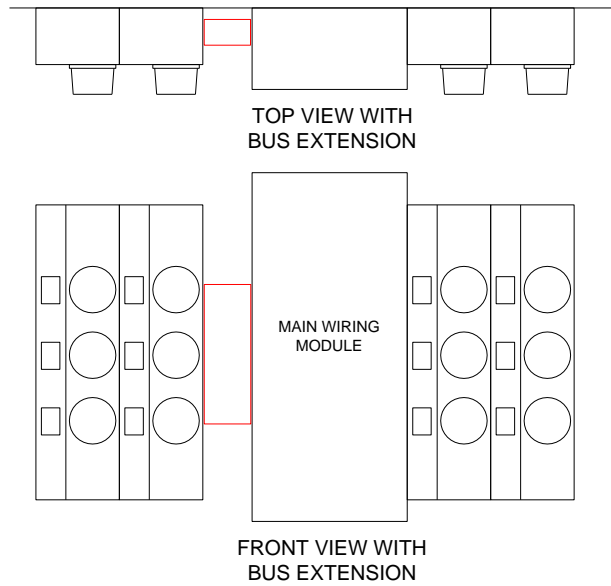


Figure 2

SqD will provide information and guidance to its sales personnel and customers to ensure that they are aware of APC's requirement for use of the bus extension. It is to APC's benefit for our personnel to be familiar with this requirement in case we encounter a new installation being proposed or built without the required bus extension.